

Parking

We have onsite car parks available for clients to use when visiting our Tauranga office:
Level 2, Northern Quarter, 45 The Strand, Tauranga.

The carpark entrance is on Hamilton Street. Once parked in the basement carpark, walk up the far ramp towards The Strand entrance. Take the lift or stairs to Level 2 for Holland Beckett Reception.

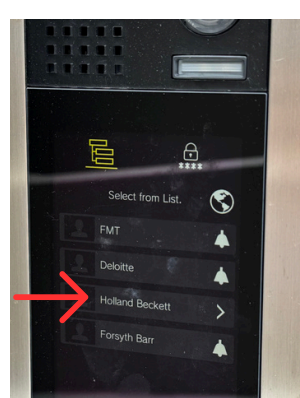
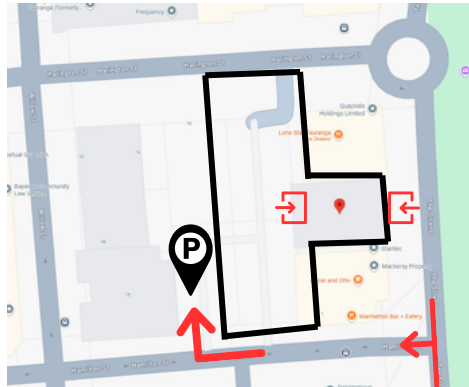
PLEASE READ THE PARKING INSTRUCTIONS BELOW SO YOU CAN FIND US EASILY ON ARRIVAL.

The carpark entry/exit is accessed by **Hamilton Street** as indicated by the arrow on the map. Please remember Hamilton Street is one way so you need to enter from The Strand. The carpark entrance is the first driveway on the right.

This is a secure carpark and the gate will be closed.

On arrival, please use the **intercom** to call **Holland Beckett - Reception**.


Reception will open the gate and will tell you which bay to park in - please park in your allocated bay.



Car park **bays 22 to 26** are on your **right** as you enter. Parking bay 8 is a mobility space close to the entrance.

Northern Quarter has two lobbies accessible from the carpark - Hamilton Street and The Strand.

Holland Beckett can only be accessed from The Strand lobby. The Strand lobby is straight ahead of our carparks, marked by a large 'STRAND' sign - please use this exit to enter the lobby. Holland Beckett is located on Level 2, accessible by lift and stairs.

Pedestrians can access this lobby from the main entrance at 45 The Strand. Both entrances are marked with  on the map above.

Holland Beckett cannot be accessed from the Hamilton Street lobby, lift or stairs.

If there is no carpark availability, reception will let you know - there are multiple car park buildings/spaces within a short walk.

